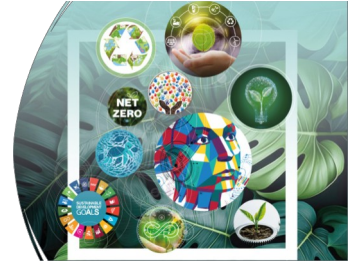




LIC'24
8th edition LIQUE
International Conference

“Plural ecologies : towards a transition of organizations”

EL Mouradi Hotel, Gammarth - Tunisia
November 28, 29 & 30, 2024



REGISTRATION FORM

Personal Information:

Full name:

Affiliation/Institution:

Job Title/Position:

Email Address :

Phone number (Whatsapp):

Status:

Participation details:

Registration category and fees: *Please Check the appropriate box*

- International Participant -Academic: 300 euros**
Fees include conference materials, accommodation for three (03) nights in a single room with bed & breakfast (November 27, 28, and 29), lunch and coffee breaks on November 28 and 29, dinner on November 28, and all applicable taxes.
- International Participant -Postdoctoral, PhD or Master’s Student: 220 euros**
Fees include conference materials, accommodation for three (03) nights in a double room with bed & breakfast (November 27, 28, and 29), lunch and coffee breaks on November 28 and 29, dinner on November 28, and all applicable taxes. Extra fees of 85 TND per night will apply for a single room.
- International Participant without accommodation: 150 euros**
Fees include conference materials, lunch and coffee breaks on November 28 and 29.
- International Online Participant:**
 - Academic (**100 Euros**)
 - Postdoctoral, PhD or Master’s student (**70 Euros**)
- Tunisian Participant- Academic: 600 TND**
Fees include conference materials, accommodation for one (01) night in a single room with bed & breakfast (November 28), lunch and coffee breaks on November 28 and 29, dinner on November 28 and all applicable taxes.
- Tunisian Participant- Postdoctoral, PhD or Master’s Student: 450 TND**
Fees include conference materials, accommodation for one (01) night in a double room with bed & breakfast (November 28), lunch and coffee breaks on November 28 and 29, and all applicable taxes. Extra fees of 85 TND per night will apply for a single room.
- Tunisian Participant without accommodation: 350 TND**
Fees include conference materials, lunch and coffee breaks on November 28 and 29.
- One-day access, November 28** **One-day access, November 29**
One-day access fees for your selected date include conference materials, lunch and coffee breaks
 - Academic (**175 TND**)
 - Postdoctoral, PhD or Master’s Student (**80 TND**)
- Tunisian Participant -Business: 400 TND**
Fees include conference materials, lunch and coffee breaks on November 28 and 29.



Registration fees covered by the organizers

Fees include conference materials, lunches, coffee breaks.

Please confirm your selected category and applicable fees:

Extra fees for a single room:

Payment information : *Please Check the appropriate box*

- Order form (Bon de commande)**
- Bank Transfer** *(Please attach proof of payment by bank transfer to this form)*
- Check**
- On-site Payment**
- Fees covered by the organizers**

- For payment via bank transfer, please use the following information:
 - Account Name:** Association pour la Promotion de l’Innovation et de la Qualité (APIQ)
 - Bank Name:** Attjari bank, Agence Ennassr 2
 - Account Number (RIB):** 04 021 107 0019 49398 0 81
 - IBAN:** TN59 04 021 107 0019 49398 0 81
 - Matricule fiscal:** 1540347/N/P/N/000
- For on-site payments: Payments made in foreign currency will be converted at the prevailing exchange rate on the day of the transaction.

Hotel information:

- El Mouradi Gammarth, Les côtes de Carthage, La Marsa. Gammarth, Tunisia
- Web site: www.elmouradi.com
- Early check-in is available from 12:00 PM (noon) and late check-out is until 02:00 PM.

After completing the registration form, please,

1- Send it back by email to: ligue.international.conference@gmail.com

2- Fill out the Google form provided here:

<https://forms.gle/4S8ZT6QjGfFKFK3W9>

For LIGUE members only, please fill out this Google form:

<https://forms.gle/RSuN976BQiVciRm99>

P.S. For your convenience, we recommend saving the completed PDF form by selecting « Print » then choosing the « Print to PDF » option. This will ensure to have a non modifiable saved copy.